

# SCOTSMAN

ECLIPSE™ REMOTE COOLED MODULAR CONTOUR CUBERS



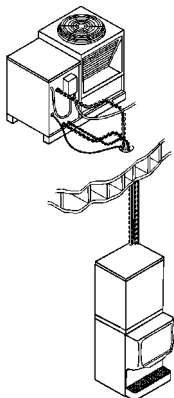
CME810 SHOWN ON BEVERAGE DISPENSER



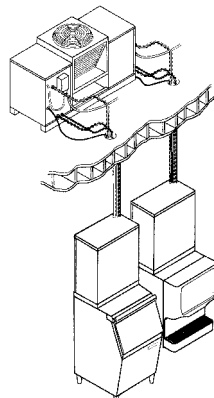
COMPRESSOR UNIT



REMOTE CONDENSER



Eclipse System connected to single remote condenser




Two Eclipse Systems connected to a dual remote condenser

## Eclipse™

# 800 Lb. CUBERS

VOLUME PRODUCTION • 24 HOUR

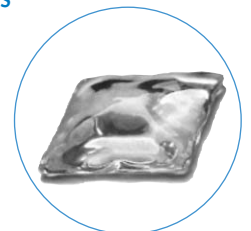
 Certified & rated in accordance with ARI standard 810-95	Use With Compressor Unit	Remote-Cooled	
		70°/50° lbs./kg.	ARI 90°/70° lbs./kg.
CME810RLS-1	CP886	725/330	680/309

ECLIPSE™ TECHNOLOGY, CREATING SMALLER, QUIETER, MORE RELIABLE ICE MACHINES THAT ECLIPSE ALL OTHERS ON THE MARKET TODAY.

- Designed with flexibility in mind, Eclipse ice machines can be paired with any dispenser or storage bin to supply ice to any area of your operation.
- Eclipse technology moves the compressor and condenser on to the roof. By taking these large components out of the ice machine, you have a quiet, easy to service, narrow profile unit that allows easy cleaning access to the beverage dispenser or storage bin.
- Modular, patented design features a compressor pressure regulator valve that insures optimum performance and reliability.
- Eclipse offers quick and flexible installation because it can be connected to either its own, dual or properly sized universal rack or multi-pass condenser system.
- Equipped with CM<sup>3</sup> technology featuring Auto IQ™ Control System, CM<sup>3</sup> Evaporator and a rust free polyethylene base and food zone that's backed by a lifetime rust free warranty.
- CM<sup>3</sup> technology features ReliaClean™, a simplified push button cleaning process, to help keep your ice machine clean.
- Offers the Lowest Lifetime Cost of Ownership based on low water and electrical usage.
- 14 ft. power cord on Ice Maker for quick installations.
- Now protected with AquaArmor™ utilizing AgION™, a silver-based anti-microbial compound that reduces the growth of bacteria, microorganisms, algae, mold and slime on ice machine surfaces. AgION is a trademark of AgION Technologies and is registered with the EPA.

**WARRANTY** – See your dealer for complete warranty details

- Limited Lifetime Rust Free Warranty on Food Zone
- 3 year parts and labor on all components
- 5 years parts and labor on the CME evaporator
- 5 years parts on the compressor and condenser



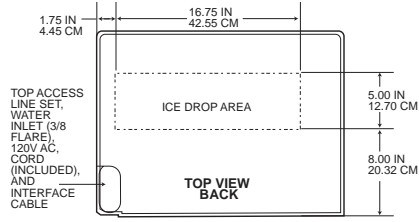
APPROX. CUBE SIZE:  
1<sup>3</sup>/<sub>8</sub>" X 1<sup>3</sup>/<sub>8</sub>" X 5/<sub>8</sub>" THICK



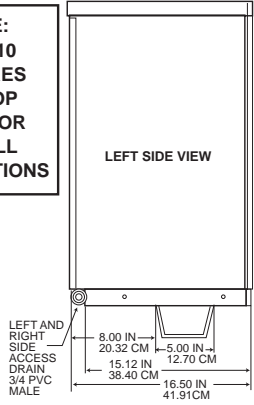
CERTIFIED  
**ISO**  
9001:2000

# Ice Machine Specifications

## Ice Machine

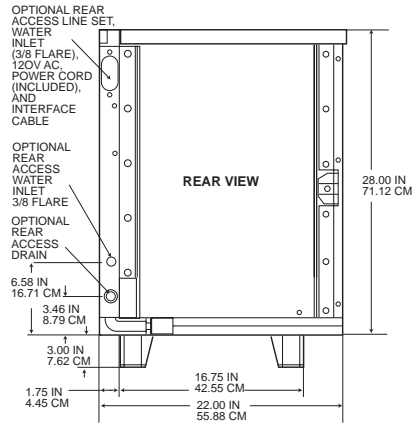


**NOTE:**  
CME810  
REQUIRES  
BIN TOP  
ADAPTOR  
FOR ALL  
APPLICATIONS

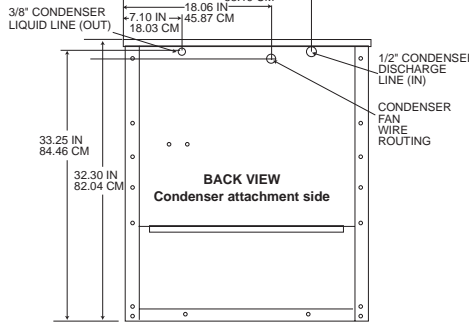
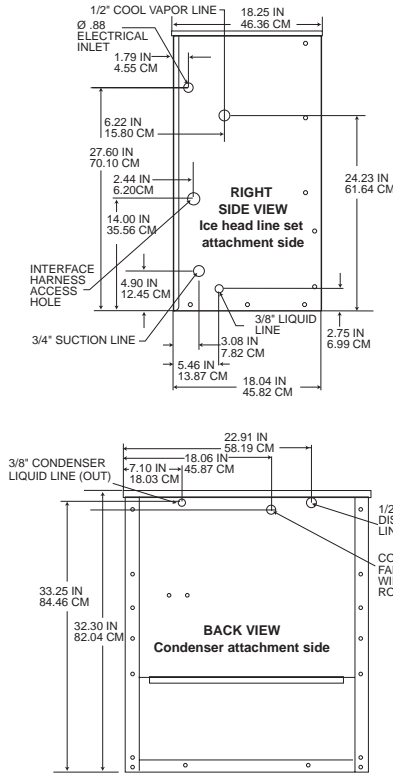
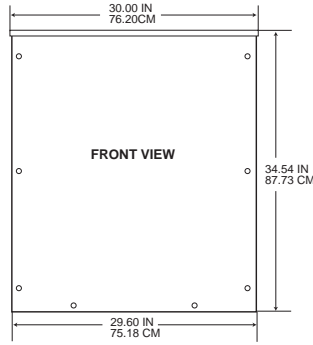


ICE MACHINE AND  
CP UNIT REQUIRE  
FRONT ACCESS  
FOR SERVICE

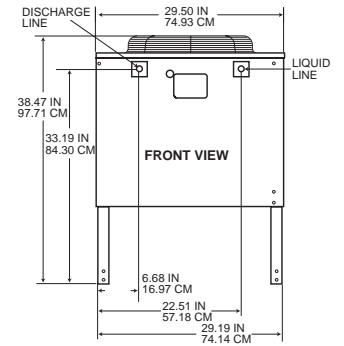
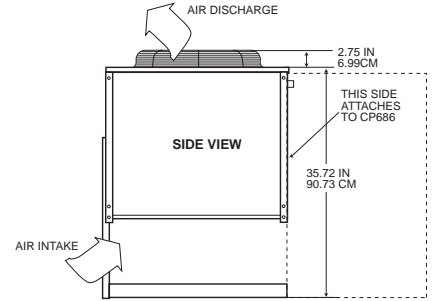
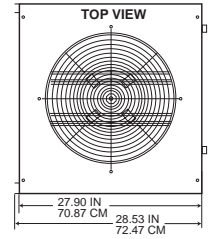
ICE MACHINE  
REQUIRES SPACE  
ON THE LEFT  
AND TOP FOR  
MAINTENANCE



## Compressor Unit



## Remote Condenser



AIR COOLED CONDENSER  
REQUIRES SPACE AT THE SIDES  
AND ABOVE FOR AIR FLOW

Dimensions: W x D x H RLS Unit: 22" x 16-1/2" x 28" Shipping Carton: 25" x 20" x 35" CP Unit: 29-3/4" x 18" x 34-1/2" Shipping Carton: 33" x 21" x 38"

Model Number	Condenser Type	Use With	Basic Electrical Volts/Hz/Phase	Max. Fuse Size or HACR Circuit Breaker	Comp. HP	Min. Circuit Wires	Circuit Ampacity	BTUs/ Hour	Shipping Weight lbs./kg.	Power Consumption kWh/100 lb. 90°/70°	Potable Water Usage Gal./100 lbs. 90°/70°
CME810RLS-1A	RLS		115/60/1	15	N/A	2	CORD	N/A	118/54	N/A	17.0
	N/A	CP886-32A	208-230/60/1	15	1.5	2	14.6	13,000	218/99	6.4	N/A
	N/A	CP886-3A	208-230/60/3	15	1.5	3	10.4	13,000	218/99	6.4	N/A

REMOTE CONDENSER—Comes with legs Dimensions: W x D x H : 29.75" x 28.63" x 38.5"

Model Number	Use With	Finish	Basic Electrical Volts/Hz/Phase	Max Fuse Size or HACR Circuit* Breaker	Circuit* Wires	Min. * Circuit Ampacity	Shipping Weight lbs./kg.
ERC680-32A	CME686RLS or CME810RLS	GALVANIZED	208-230/60/1	15	2	1.25	107/49
ERC2C6810-32A	ANY 2 - CP686, CP886, CP1086	GALVANIZED	208-230/60/1	15	2	1.25	185/84

\* Condenser fan powered by CPU unit.

PRE-CHARGED REFRIGERANT TUBE KITS: 20-Foot, 3RTE20 • 35-Foot, 3RTE35 • 50-Foot, 3RTE50 • 75-Foot, 3RTE75 R-404A Refrigerant

Scotsman's ice machines are not designed for outdoor installations. Scotsman remote condensers are designed for outdoor installations.

## ICE MAKER IMPORTANT OPERATING REQUIREMENTS:

	Minimum	Maximum
Air Temperatures	50°F (10°C)	100°F (37.7°C)
Water Temperatures	40°F (4.4°C)	100°F (37.7°C)
Remote Cond. Temps	-20°F (-28.9°C)	120°F (48.9°C)
Water Pressures	20 PSIG	80 PSIG
Electrical Voltage	-5%	+10%

**YOU'LL VALUE THE DIFFERENCE.™**

775 Corporate Woods Parkway • Vernon Hills, IL 60061 • 1-800-SCOTSMAN • Fax: (847) 913-9844  
Visit our website at: [www.scotsman-ice.com](http://www.scotsman-ice.com) • E-mail: [customer.service@scotsman-ice.com](mailto:customer.service@scotsman-ice.com)